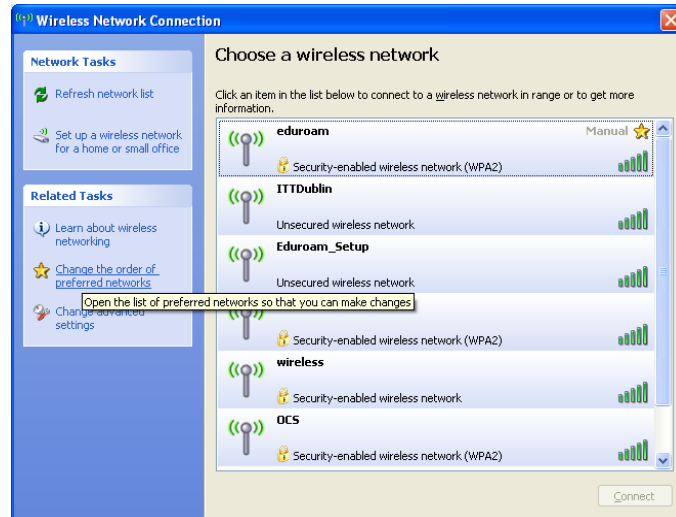


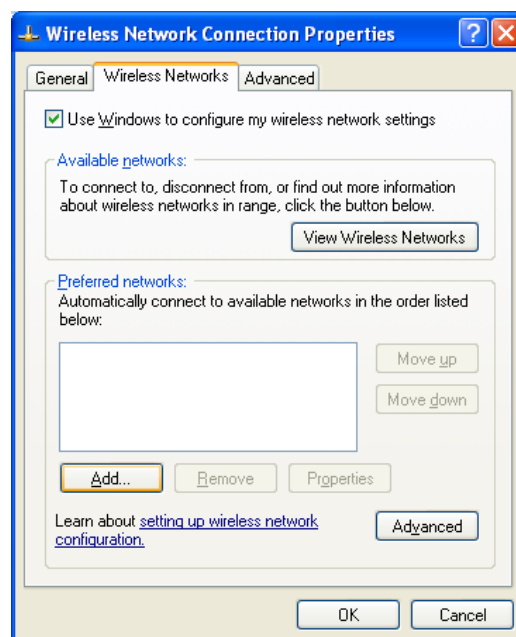


EDUROAM Manual Setup on Windows XP

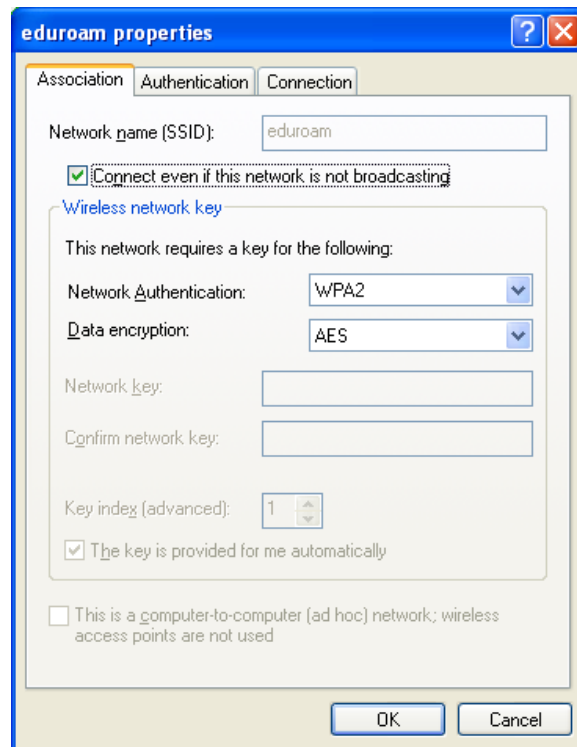
- 1.) Double Click on the wireless network icon in the task tray.
- 2.) Click **View Wireless Networks**.
- 3.) Click **Change Advanced Settings**



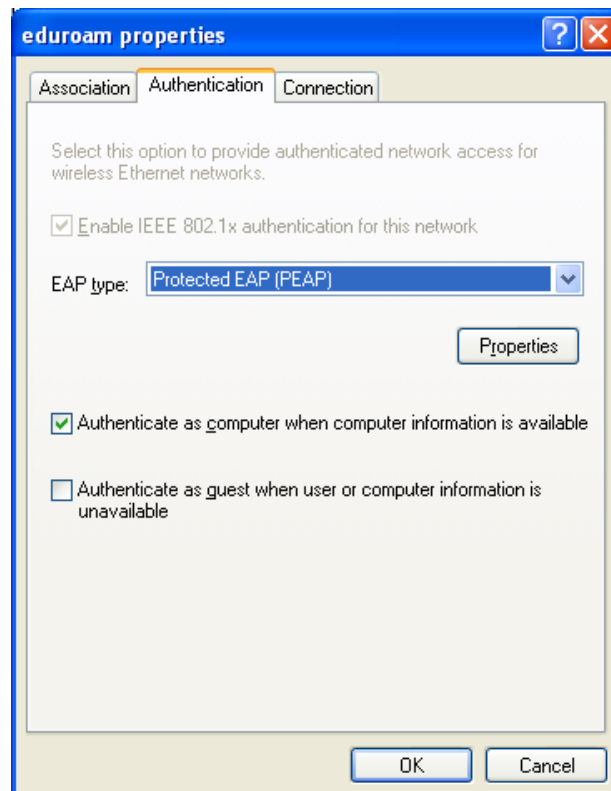
- 4.) Select the **Wireless Networks** tab and click **Add**



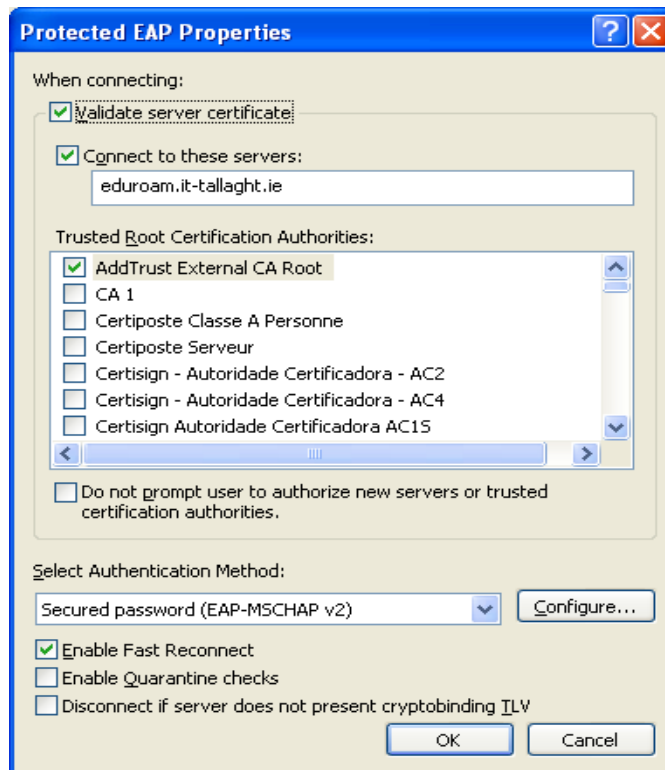
5.) Fill in the settings in the **Association** tab as shown below#



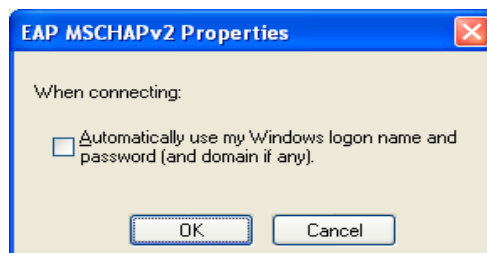
6.) Select the **Authentication** tab and fill in the details as shown below.



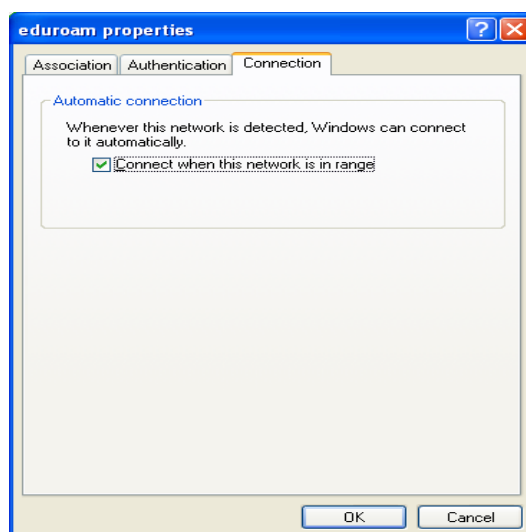
7.) Click the **Properties** button.



- 8.) Click the **Configure** button and make sure that the “**Automatically Use my Windows logon name and password (and domain if any)**” is **UNCHECKED**

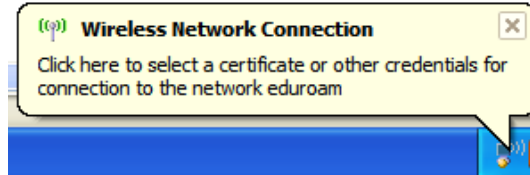


- 9.) Select the **Connection** tab, and tick the box as shown below.



10.) Now the Eduroam Profile is created you will be able to connect to the Eduroam wireless network.

The first time that you connect to Eduroam, you will be asked for your staff \ student credentials.



11.) A window will appear like below. Fill in your credentials as below.

School of Business and Humanities

Username: x12345678@stu.it-tallaght.ie

Password: same as pc / moodle / email login.

School of Engineering students

Username: x12345678@eng.stu.it-tallaght.ie

Password: same as pc / moodle / email login

School of Science and Computing

Username: x12345678@computing.stu.it-tallaght.ie

Password: same as pc / moodle / email login.

Staff

Username: stafflogin@stf.it-tallaght.ie

Password: same as email and pc login



This process should only need to be carried out once per device.

