
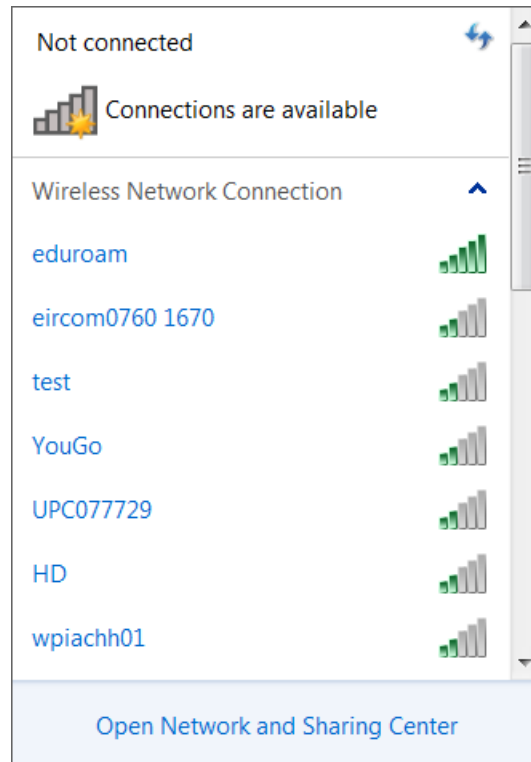


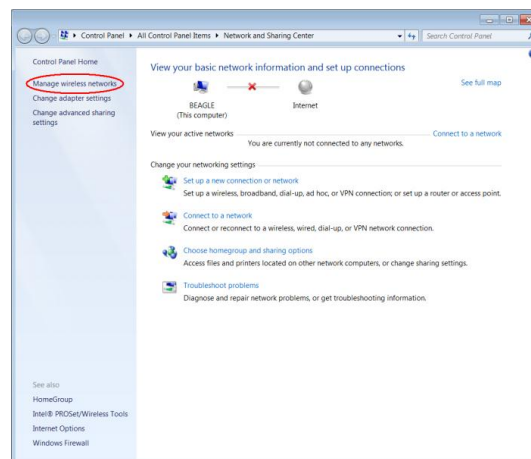


EDUROAM Manual Setup on Windows 7

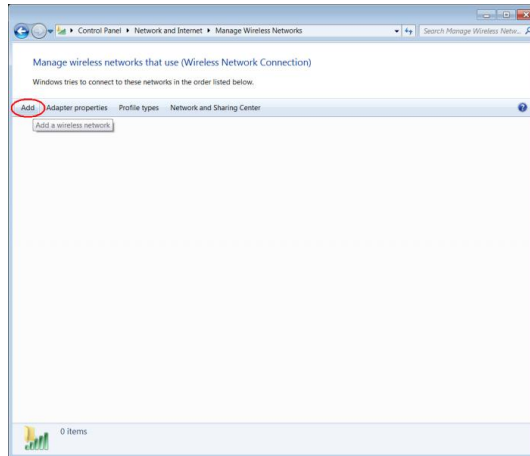
- 1.) Left-click on the application icon  in the tray. Click **Open Network and Sharing Center** to manage your wifi profiles.



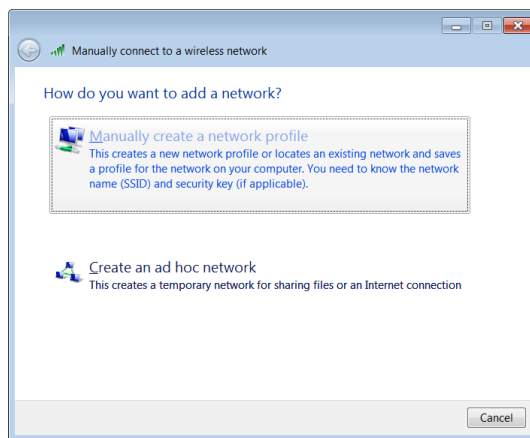
- 2.) Click **Manage wireless networks**, on the left of the window.



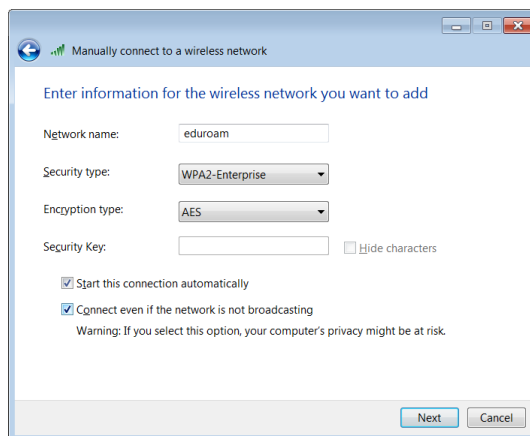
- 3.) In the wireless network management window click **Add** to add a new profile.



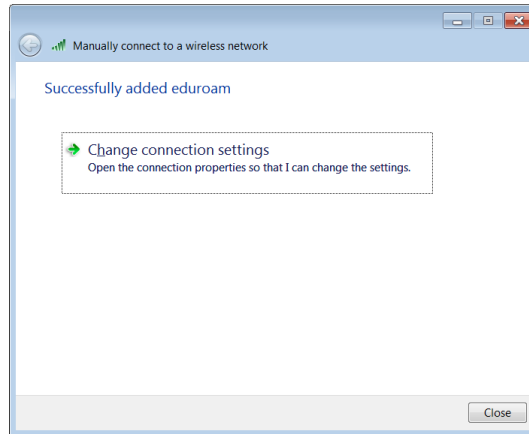
4.) Select **Manually create a network profile**.



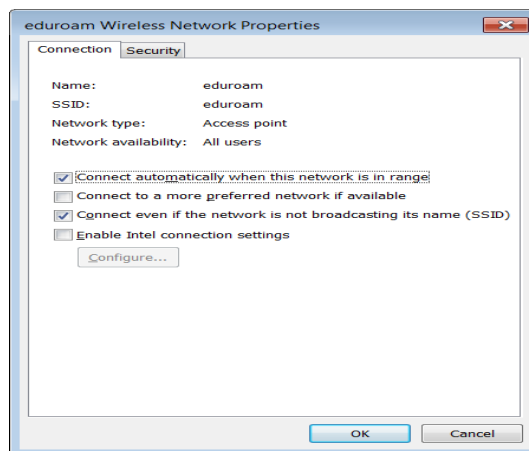
5.) Enter the details as per the diagram below and click **Next**.



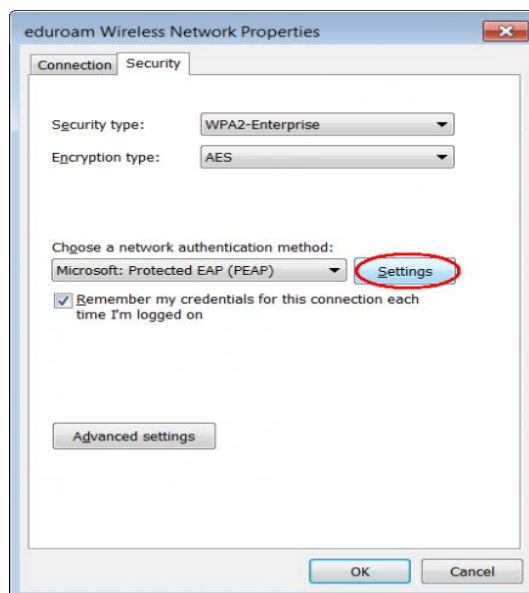
6.) A window is displayed saying that the profile has been successfully added. Click **Change connections settings** to complete the profile configuration.



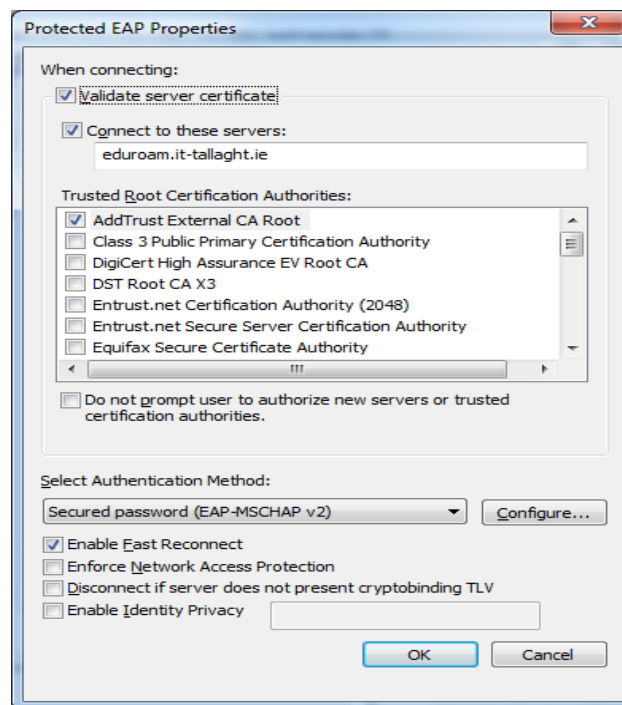
7.) Enter the details as per the diagram below then select the **Security** tab.



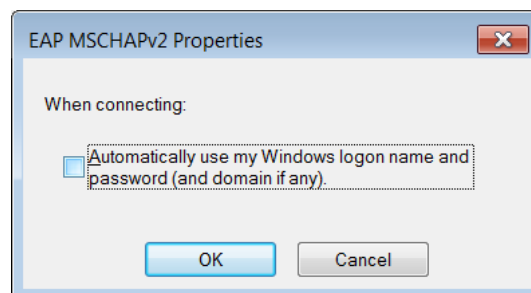
8.) Enter the details as per the diagram below and click **Settings**.



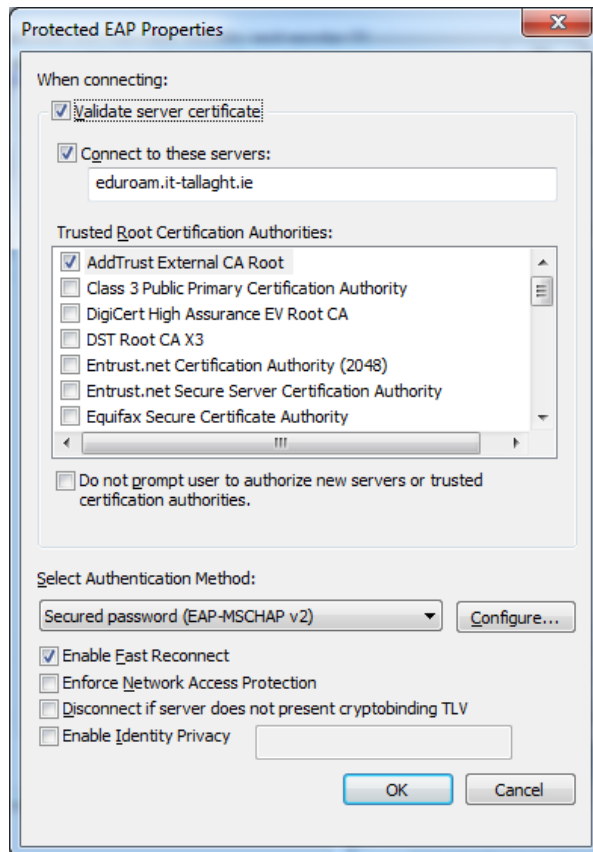
9.) Enter the details as per the diagram below then click **Configure**.



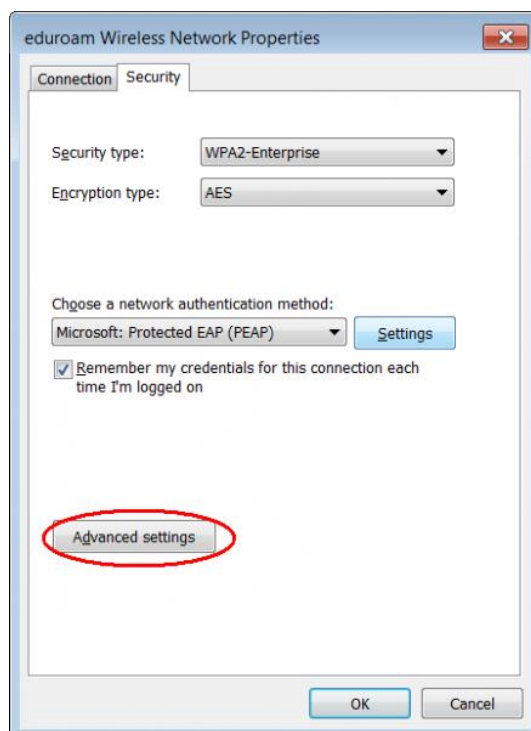
10.) Uncheck the box that says **Automatically use my windows logon name and password** then click **OK**.



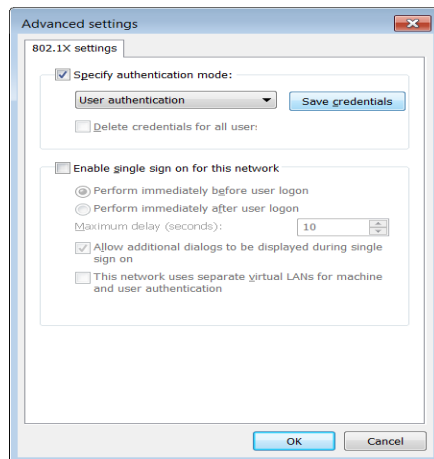
11.) You will be brought back to the **Protected EAP Properties** box shown below. Click **OK**.



12.) You will be brought back to the **eduroam Wireless Network Properties** box, in the **Security tab** as shown below. Click **Advanced settings**.



13.) Enter the details as per the diagram below then Click **Save credentials**.



14.) When you click **Save credentials** you will be prompted for your Active Directory username and password entered in the form of :

School of Business and Humanities

Username: x12345678@stu.it-tallaght.ie

Password: same as pc / moodle / email login.

School of Engineering students

Username: x12345678@eng.stu.it-tallaght.ie

Password: same as pc / moodle / email login

School of Science and Computing

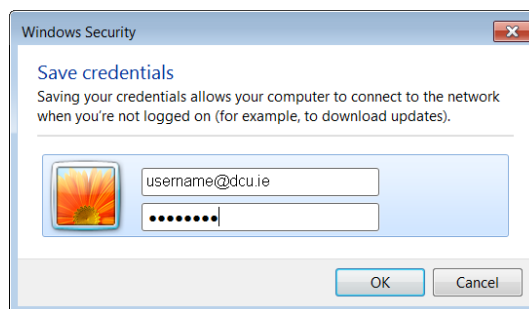
Username: x12345678@computing.stu.it-tallaght.ie

Password: same as pc / moodle / email login.

Staff

Username: stafflogin@stf.it-tallaght.ie

Password: same as email and pc login



15.) Click **OK** on the **Advanced settings** box.

16.) Click **OK** on the **eduroam Wireless Network Properties** box.

17.) Click **Close** on the **Manually connect to a wireless network** box

- 18.) Click on the eduroam profile and click **Move up** to make eduroam the default wireless network.

