



EDUROAM Manual Setup on Nokia (Symbian)

Step 1) Select Menu and then **Settings**

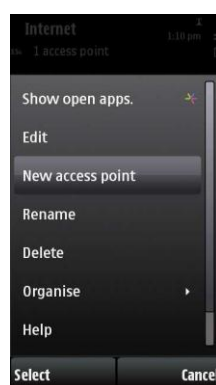
Step 2) Select **Connectivity**



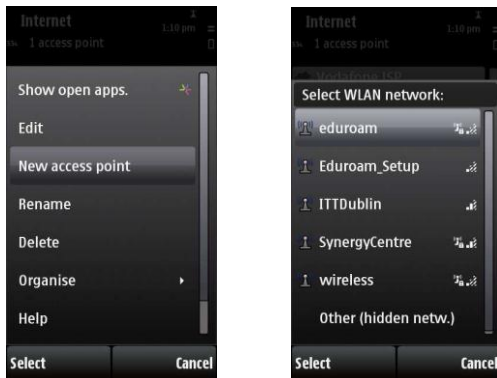
Step 3) Select **Destinations**



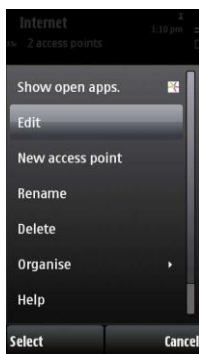
Step 4) Select **Internet**, then select **Options | New Access Point**



Step 5) Select **Wireless LAN** and select **eduroam**



Step 6) Highlight **eduroam** and click **Options | Edit**



Step 7) Set settings identical to the image below, then click **WLAN security settings**



Step 8) Make sure the following options are set as follows

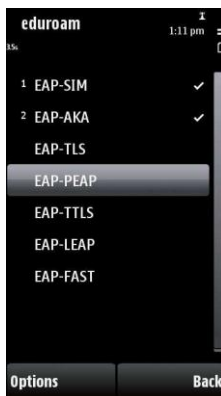
WPA/WPA2 is set to **EAP**

WPA2 only mode is set to **Off**

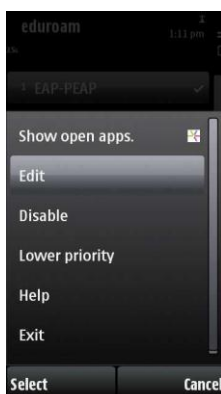
Then click EAP plug-in settings



Step 9) Select **EAP-PEAP**, this will move it to the top of the list.



Now Select **Options | Edit**

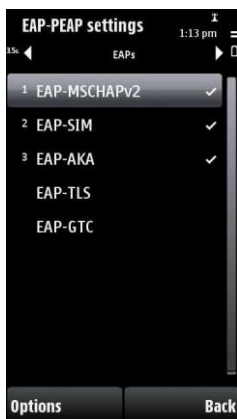


The following settings should match as illustrated below



Next step is to Configure **EAPs**. Touch the **▶** in the top right corner in previous screen.

Select **EAP-MSCHAPv2**, this will move it to the top of the list.



Select **Options | Edit**

Your User name and password should be entered in here.

School of Business and Humanities

Username: **x12345678@stu.it-tallaght.ie**

Password: **same as pc / moodle / email login.**

School of Engineering students

Username: **x12345678@eng.stu.it-tallaght.ie**

Password: **same as pc / moodle / email login**

School of Science and Computing

Username: **x12345678@computing.stu.it-tallaght.ie**

Password: **same as pc / moodle / email login.**

Staff

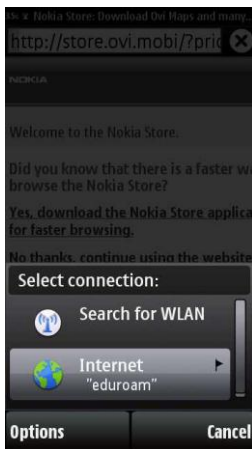
Username: **stafflogin@stf.it-tallaght.ie**

Password: **same as email and pc login**



Step 10) Open up the Nokia Web Browser. You will be asked which connection to use.

Select Internet "eduroam" as shown below.



Please note that this setup process will not need to be repeated.