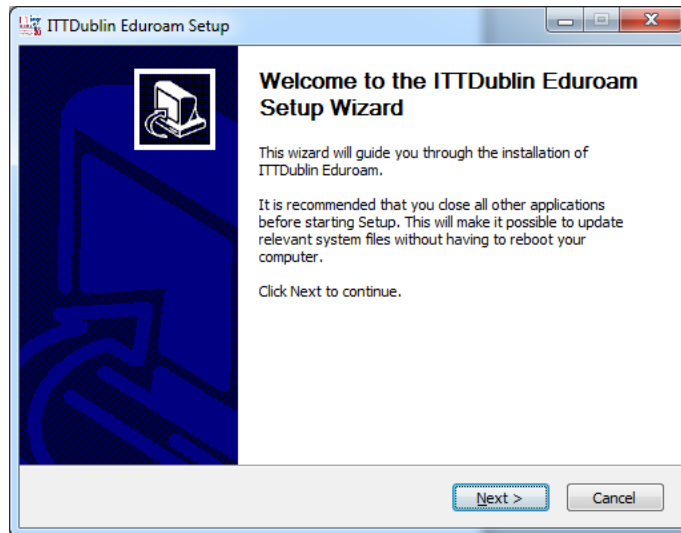


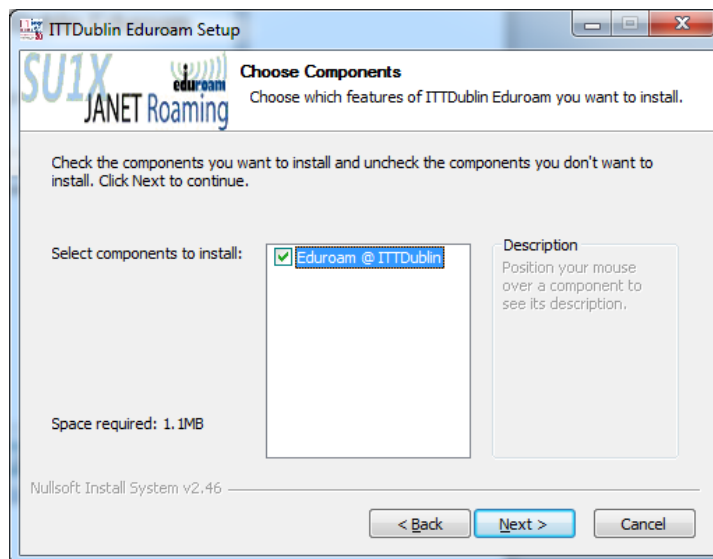


ITTDublin EDUROAM Setup Tool on Windows 7

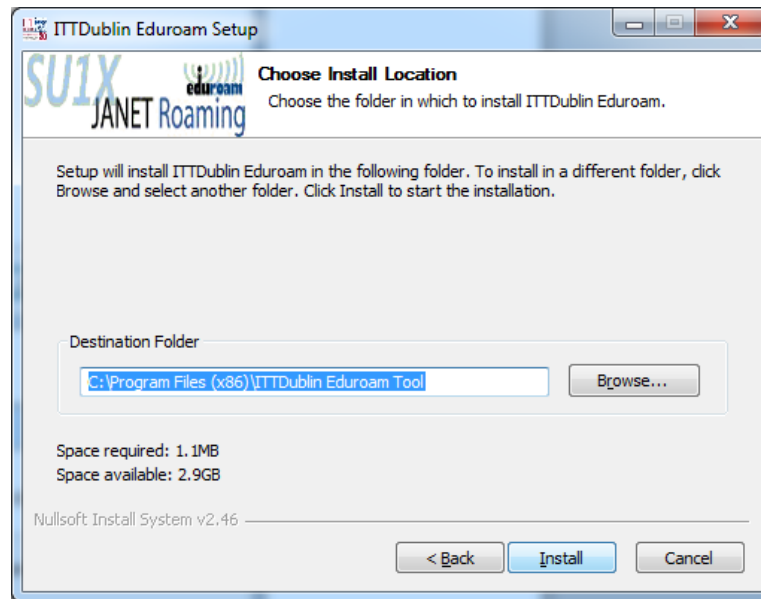
- 1.) Double click the Eduroam Installer that you downloaded from the eduroam page, and click **Next**



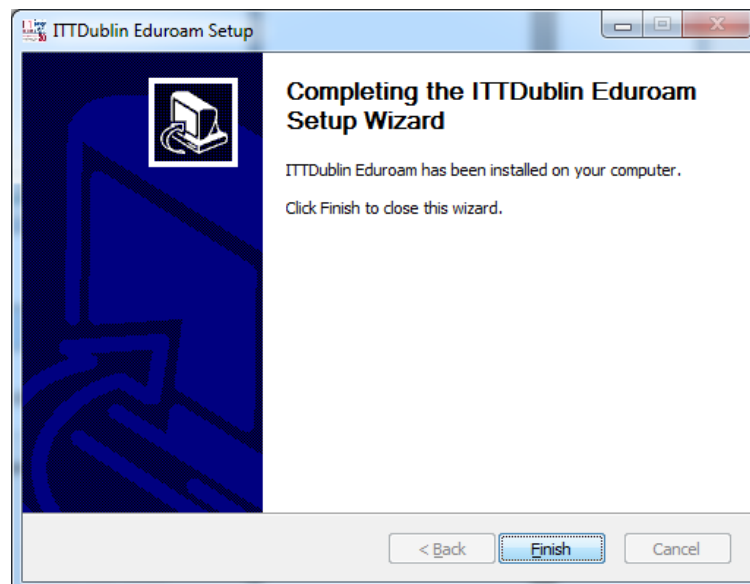
- 2.) Click **Next** on the following screen



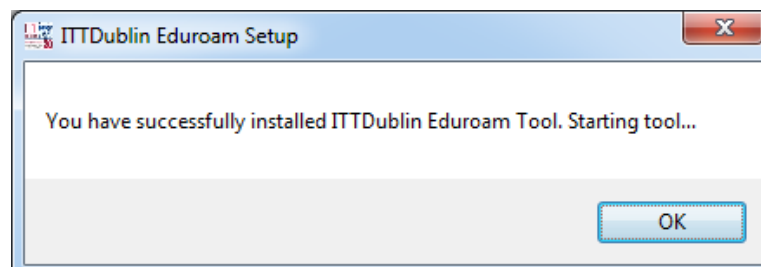
3.) Click **Install** on the following screen



4.) Click **Finish**



5.) Click **OK**



6.) Enter your credentials Please follow the format outlined below:

School of Business and Humanities

Username: x12345678@stu.it-tallaght.ie

Password: same as pc / moodle / email login.

School of Engineering students

Username: x12345678@eng.stu.it-tallaght.ie

Password: same as pc / moodle / email login

School of Science and Computing

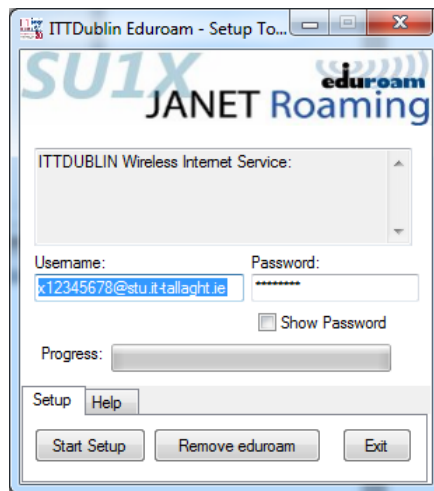
Username: x12345678@computing.stu.it-tallaght.ie

Password: same as pc / moodle / email login.

Staff

Username: stafflogin@stf.it-tallaght.ie

Password: same as email and pc login



7.) Click **Start Setup**

8.) You are now connected to the eduroam wireless service. You should not have to re-enter your credentials unless you change your password.

